

1 KITCHEN PLAN  
1/2" = 1'-0"

NEW FLOORING.  
VERIFY WITH OWNER

PLASTIC LAMINATE COUNTERTOPS

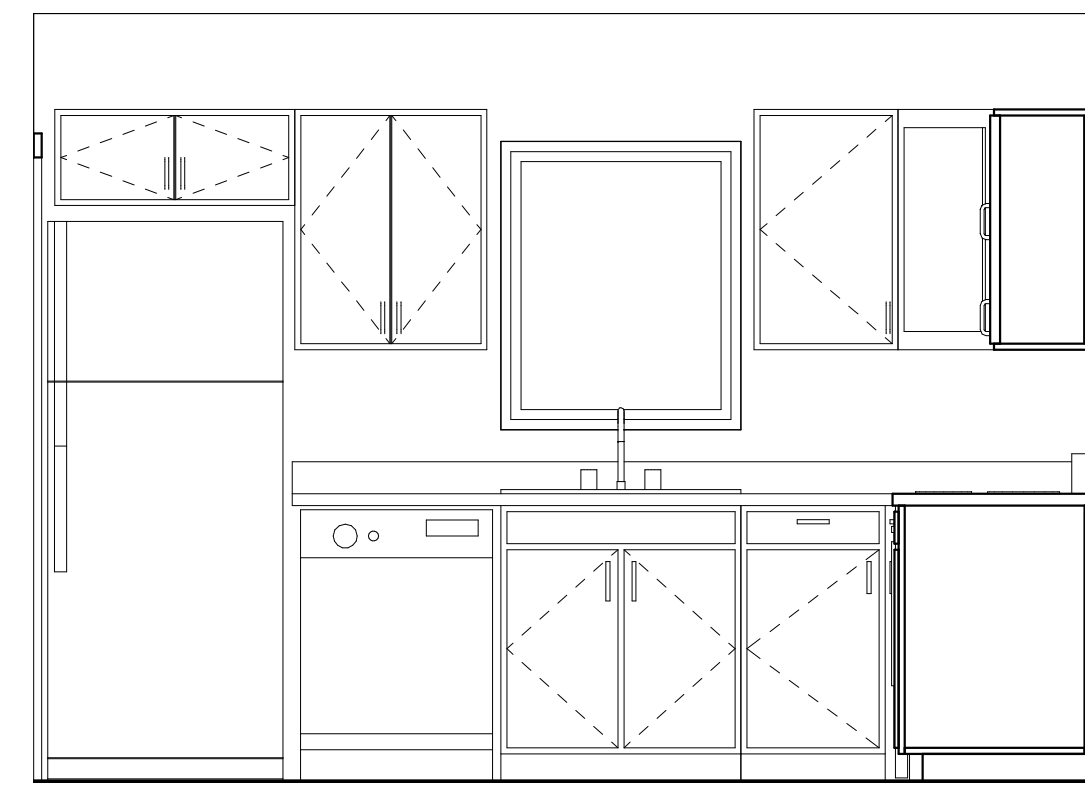
MID GRADE BOX CABINETS,  
SOLID WOOD DOORS,  
DOVETAIL DRAWERS  
HARDWARE: NICKEL

KITCHEN SINK: KOHLER TOCCATA  
FINISH: STAINLESS

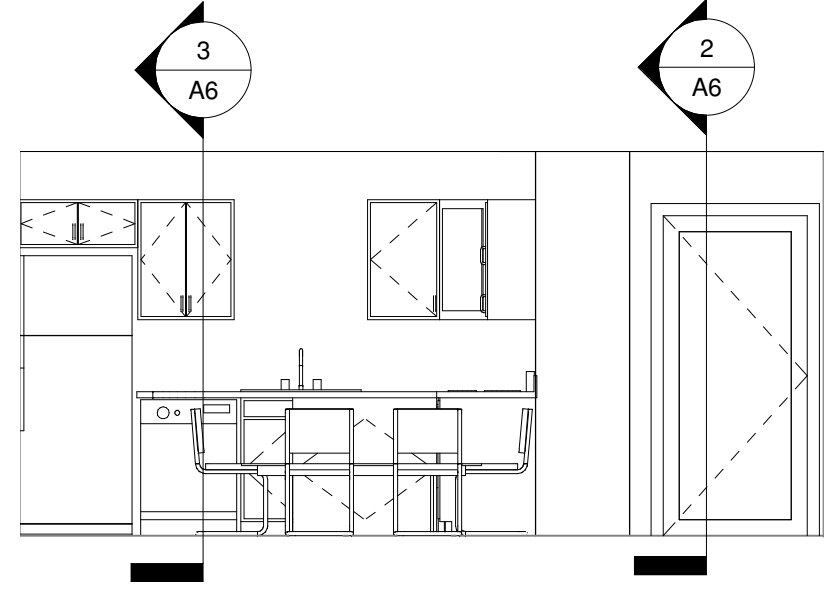
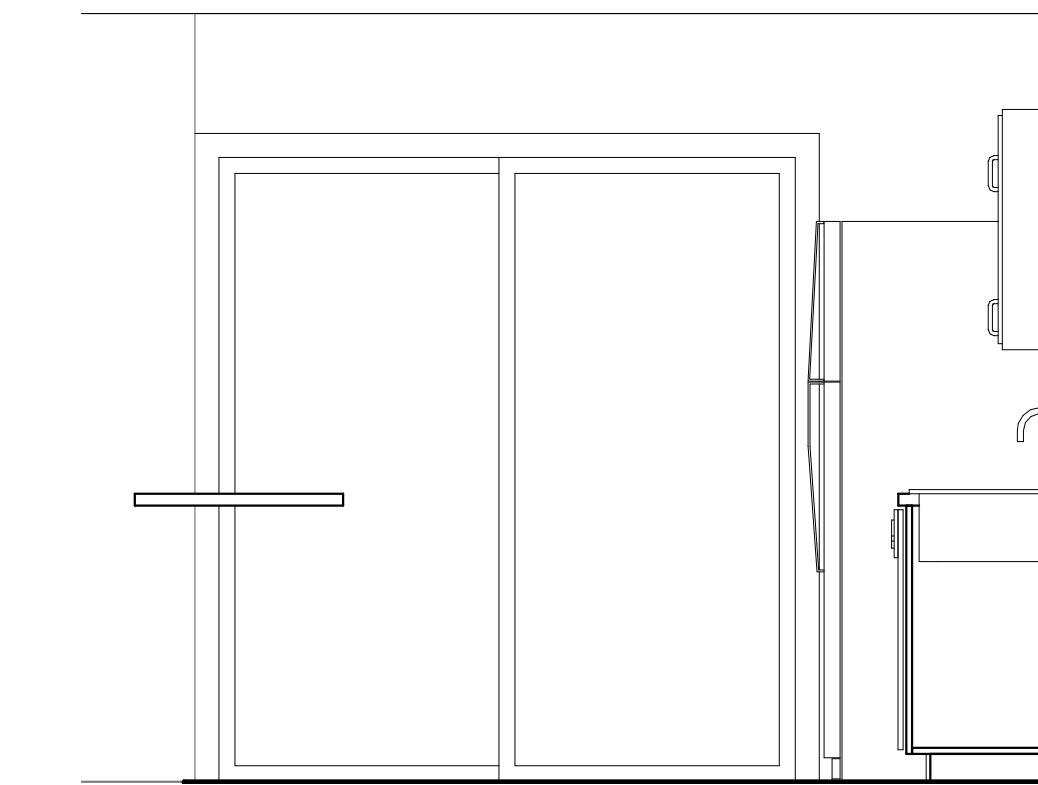
KITCHEN FAUCET: DELTA CICERO  
FINISH: NICKEL

VERIFY KITCHEN  
LAYOUT WITH OWNER  
BEFORE PURCHASING

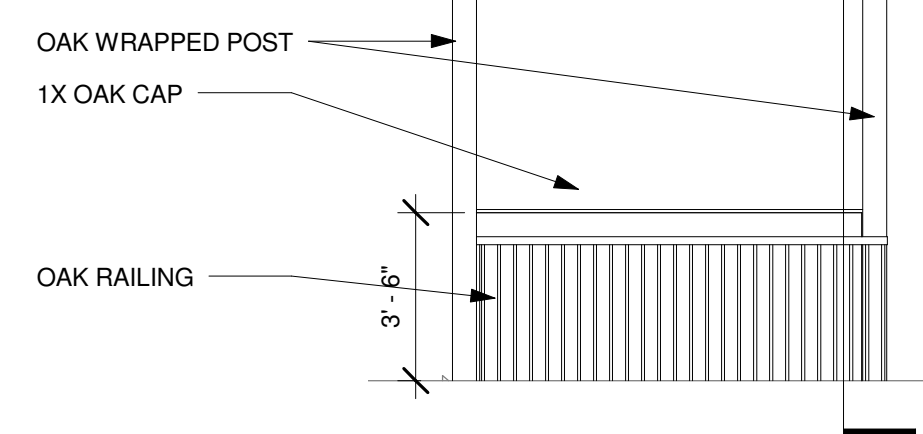
2 E. KITCHEN  
1/2" = 1'-0"



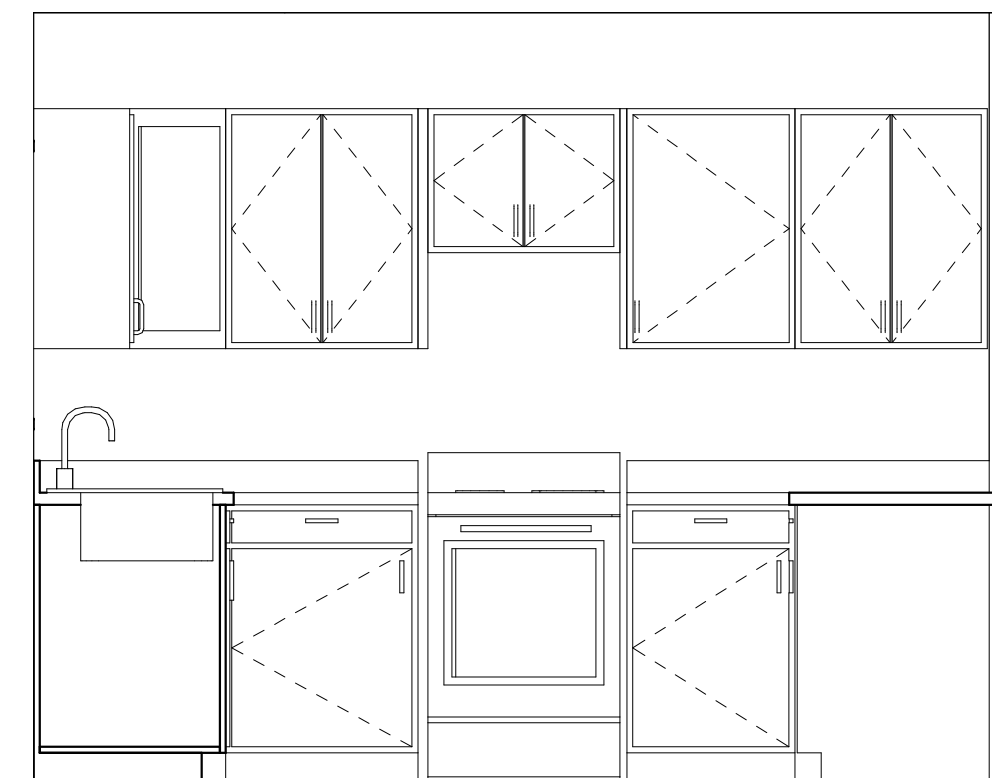
3 N. KITCHEN  
1/2" = 1'-0"



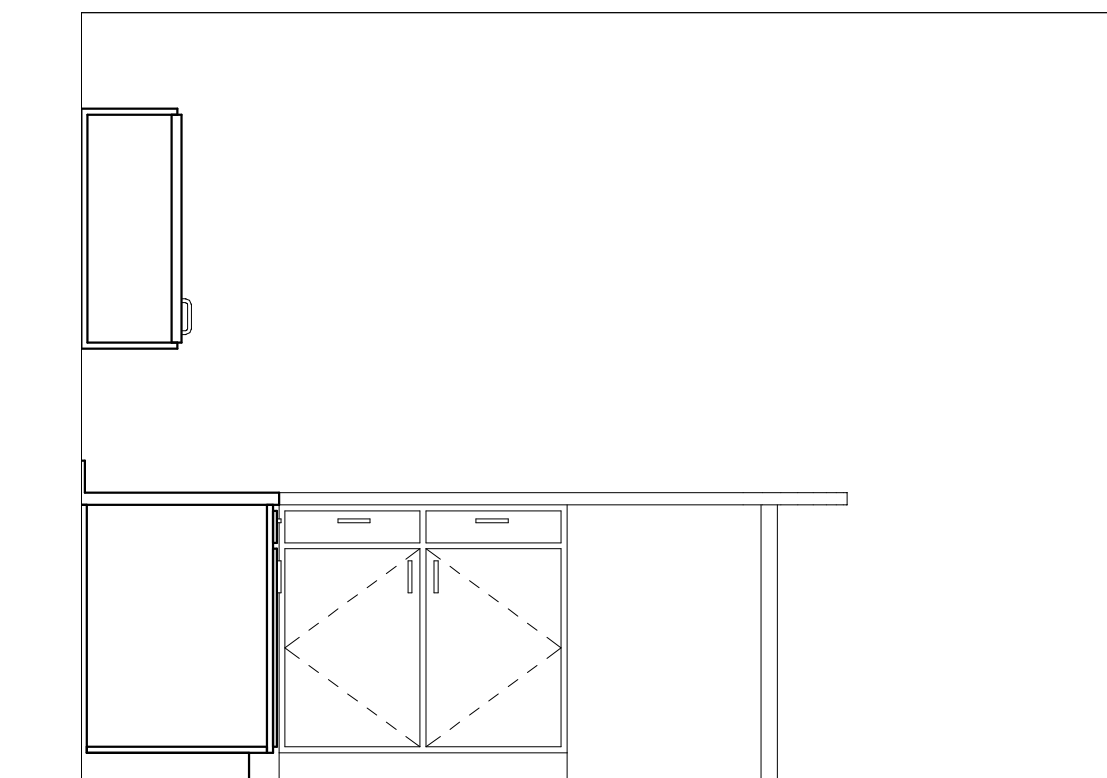
4 E. DINING  
1/4" = 1'-0"



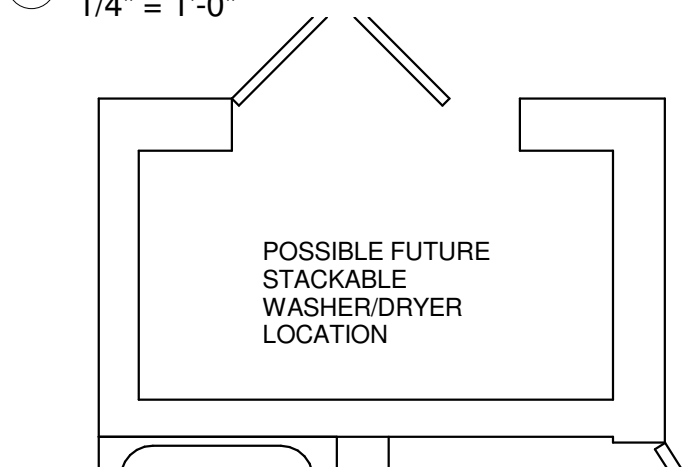
5 W. DINING  
1/4" = 1'-0"



6 S. KITCHEN  
1/2" = 1'-0"



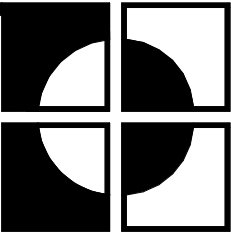
7 W. KITCHEN  
1/2" = 1'-0"



8 FUTURE W/D LOCATION  
1/2" = 1'-0"

DOOR SCHEDULE					
MARK	WIDTH	HEIGHT	OPERATION	TYPE	COMMENTS
02	2' - 8"	6' - 8"	SWING	32" x 80"	
03	2' - 6"	6' - 8"	SWING	30" x 80"	
04	2' - 8"	6' - 8"	SWING	32" x 80"	ALTERNATE
05	2' - 8"	6' - 8"	SWING	32" x 80"	ALTERNATE
101	3' - 0"	6' - 8"	SWING	36" x 80"	EXTERIOR-FULL LITE
102	2' - 8"	6' - 8"	SWING	32" x 80"	
104	4' - 0"	6' - 8"	BIFOLD	48" x 80"	
105	2' - 8"	6' - 8"	SWING	32" x 80"	
106	2' - 8"	6' - 8"	SWING	32" x 80"	
107	4' - 0"	6' - 8"	BIFOLD	48" x 80"	VERIFY EXISTING OPENING
108	2' - 0"	6' - 8"	SWING	24" x 80"	VERIFY EXISTING OPENING
109	2' - 6"	6' - 8"	SWING	30" x 80"	VERIFY EXISTING OPENING
112	6' - 0"	6' - 6"	SLIDING	72" x 78"	EXTERIOR
113	3' - 0"	6' - 8"	SWING	36" x 80"	EXTERIOR-FULL LITE

ROOM FINISH SCHEDULE									
NUMBER	NAME	WALL-NORTH	WALL-EAST	WALL-SOUTH	WALL-WEST	FLOOR	BASE	CEILING	COMMENTS
01	STAIRS	PT	PT	PT	PT	OAK	OAK	GYP BD / PT	SOLID OAK TREADS & RISERS
02	REC ROOM	MASONRY PT	MASONRY PT	MASONRY PT	MASONRY PT	EXPOSED		EXPOSED	CLEAN BLOCK BEFORE PAINT
03	MECH/ELEC	MASONRY PT	MASONRY PT	MASONRY PT	MASONRY PT	EXPOSED		EXPOSED	CLEAN BLOCK BEFORE PAINT
04	ALT. BATHROOM	PT	PT	PT	PT	CPT	WD	PT	ALTERNATE 2B
05	ALT. BEDROOM #3	PT	PT	PT	PT	VINYL	VINYL	PT	ALTERNATE 2B
101	F. ENTRY	PT			PT	WD (EXIST)	WD	PT	REFINISH WD FLOOR
102	COATS	PT	PT	PT	PT	WD (EXIST)	WD	PT	REFINISH WD FLOOR
103	LIVING	PT	PT	PT	PT	WD (EXIST)	WD	PT	REFINISH WD FLOOR
104	M. CLOSET	PT	PT	PT	PT	WD (EXIST)	WD	PT	REFIN/PATCH WD FLOOR
105	M. BEDROOM	PT	PT	PT	PT	WD (EXIST)	WD	PT	REFIN/PATCH WD FLOOR
106	BEDROOM #2	PT	PT	PT	PT	WD (EXIST)	WD	PT	REFIN/PATCH WD FLOOR
107	CLOSET	PT	PT	PT	PT	WD (EXIST)	WD	PT	REFIN/PATCH WD FLOOR
108	LINEN	PT	PT	PT	PT	NEW WD	WD	PT	PATCH IN NEW WD FLOOR
109	BATH	PT	PT	PT	PT	CT	CT	PT	
110	HALL	PT	PT		PT	NEW WD	WD	PT	NEW WOOD FLOOR
111	DINING	PT	PT	PT	PT	NEW WD	WD	PT	NEW WOOD FLOOR
112	KITCHEN	PT	PT	PT	PT	WD	WD	PT	
113	R. ENTRY	PT	PT	PT	PT	VINYL	WD	PT	



**RUST ARCHITECTS, P.A.**  
4744 WASHINGTON SQ  
WHITE BEAR LAKE  
MINNESOTA, 55110  
PHONE (651) 428-1913  
FAX (651) 428-7561

I hereby certify that this plan, specification, or report was prepared by me, or under my direct supervision and that I am a duly Licensed Architect under the laws of the State of Minnesota.  
Date: \_\_\_\_\_ License No. \_\_\_\_\_  
William E. Rust

**CITY OF WHITE BEAR LAKE  
RAMBLER REVOLUTION  
3790 MCKNIGHT ROAD  
WHITE BEAR LAKE, MN**

DRAWN BY: JAR  
CHECKED BY: WER  
PROJECT NO: RA10019  
PRINT DATE: 01-14-11

REVISIONS	
#	DATE: