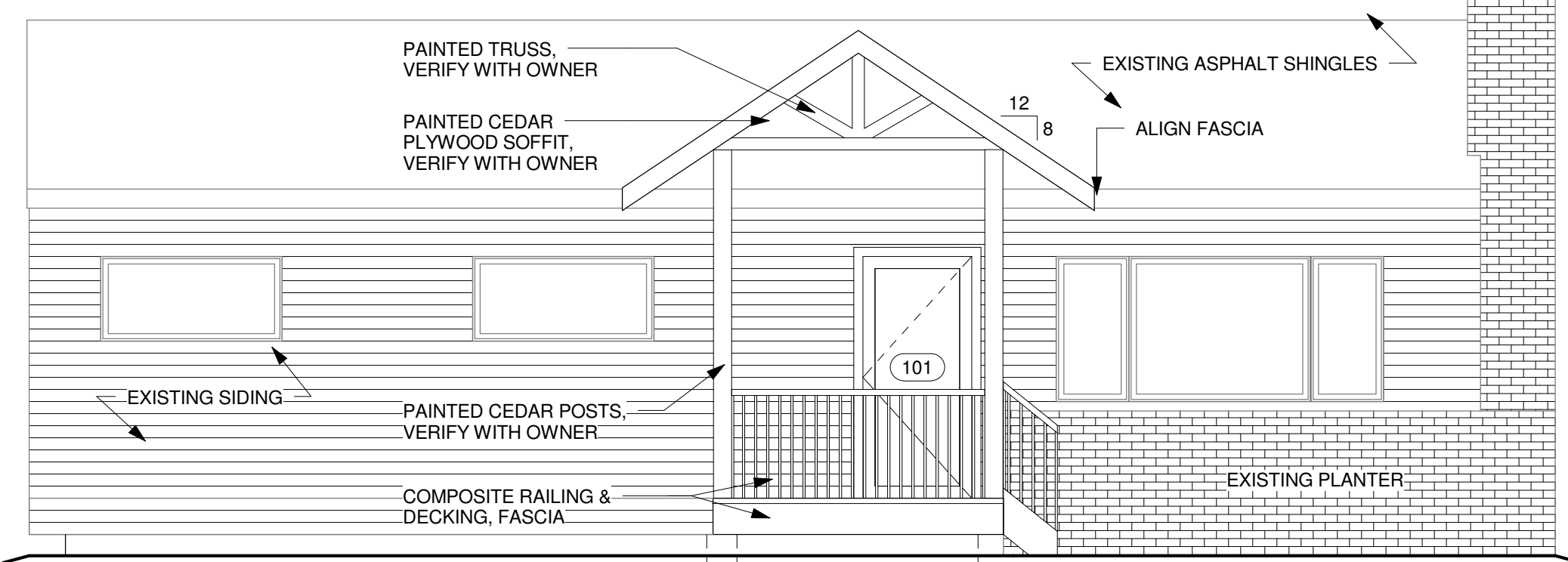
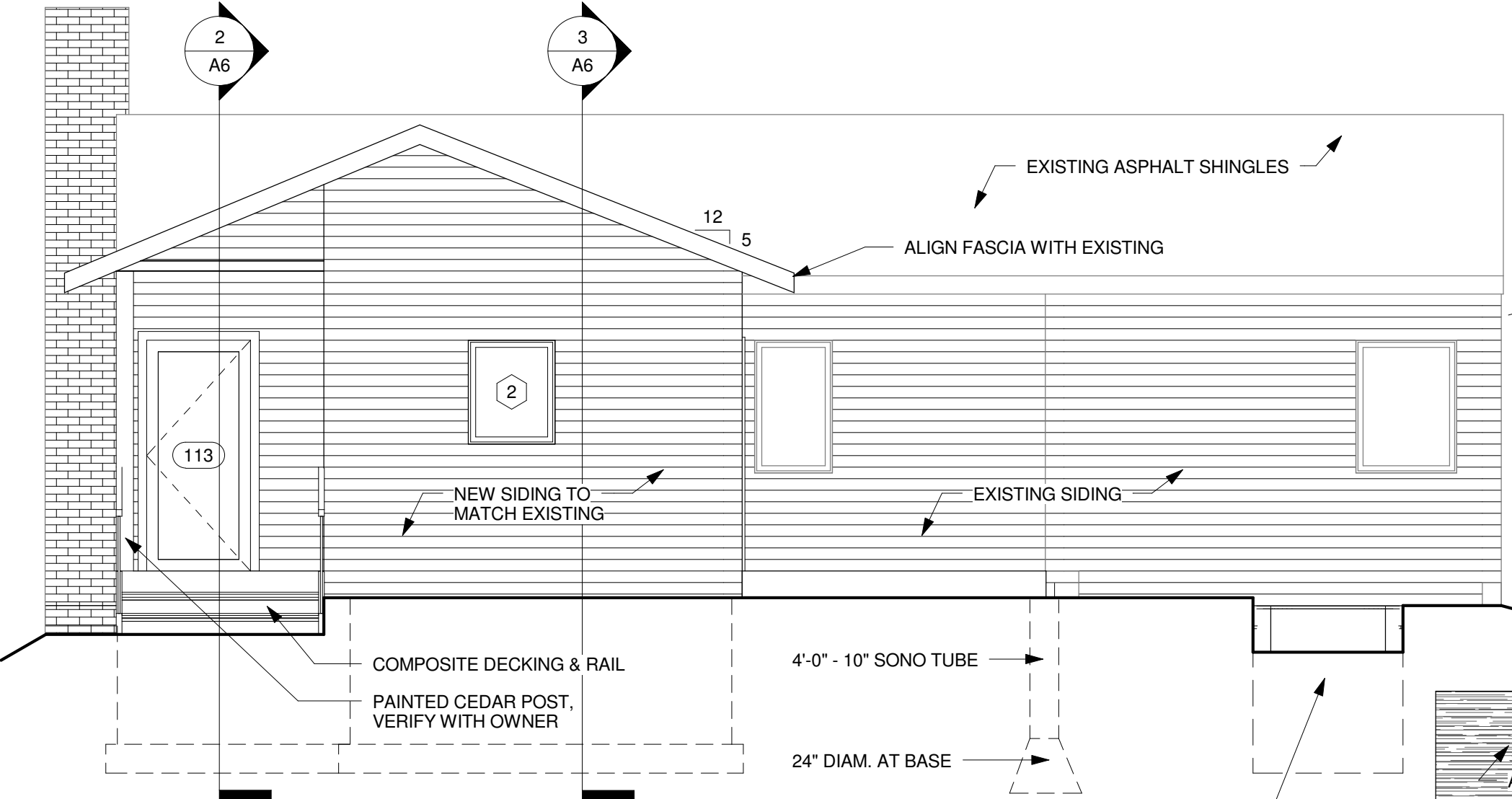


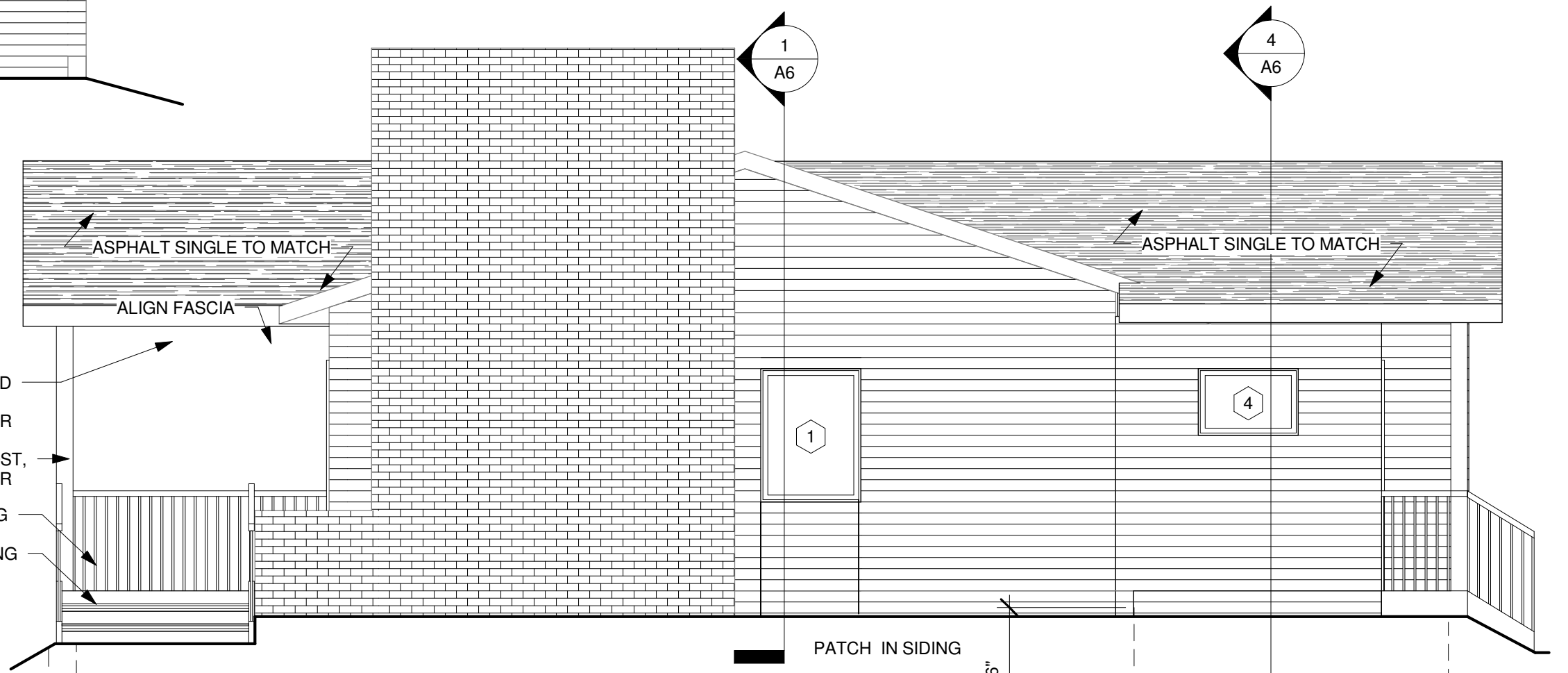
1 EXTERIOR ELEVATION - NORTH  
1/4" = 1'-0"



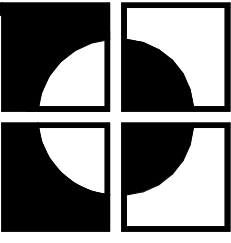
2 EXTERIOR ELEVATION - WEST  
1/4" = 1'-0"



3 EXTERIOR ELEVATION - EAST  
1/4" = 1'-0"



4 EXTERIOR ELEVATION - SOUTH  
1/4" = 1'-0"



**RUST ARCHITECTS, P.A.**  
4744 WASHINGTON SQ  
WHITE BEAR LAKE  
MINNESOTA, 55110  
PHONE (651) 428-1913  
FAX (651) 428-7561

I hereby certify that this plan, specification, or report was prepared by me, or under my direct supervision and that I am a duly Licensed Architect under the laws of the State of Minnesota.  
William E. Rust  
Date: \_\_\_\_\_ License No. \_\_\_\_\_

**CITY OF WHITE BEAR LAKE**  
**RAMBLER REVOLUTION**  
**3790 MCKNIGHT ROAD**  
**WHITE BEAR LAKE, MN**

DRAWN BY: JAR  
CHECKED BY: WER  
PROJECT NO: RA10019  
PRINT DATE: 01-14-11

REVISIONS	#	DATE:

A5